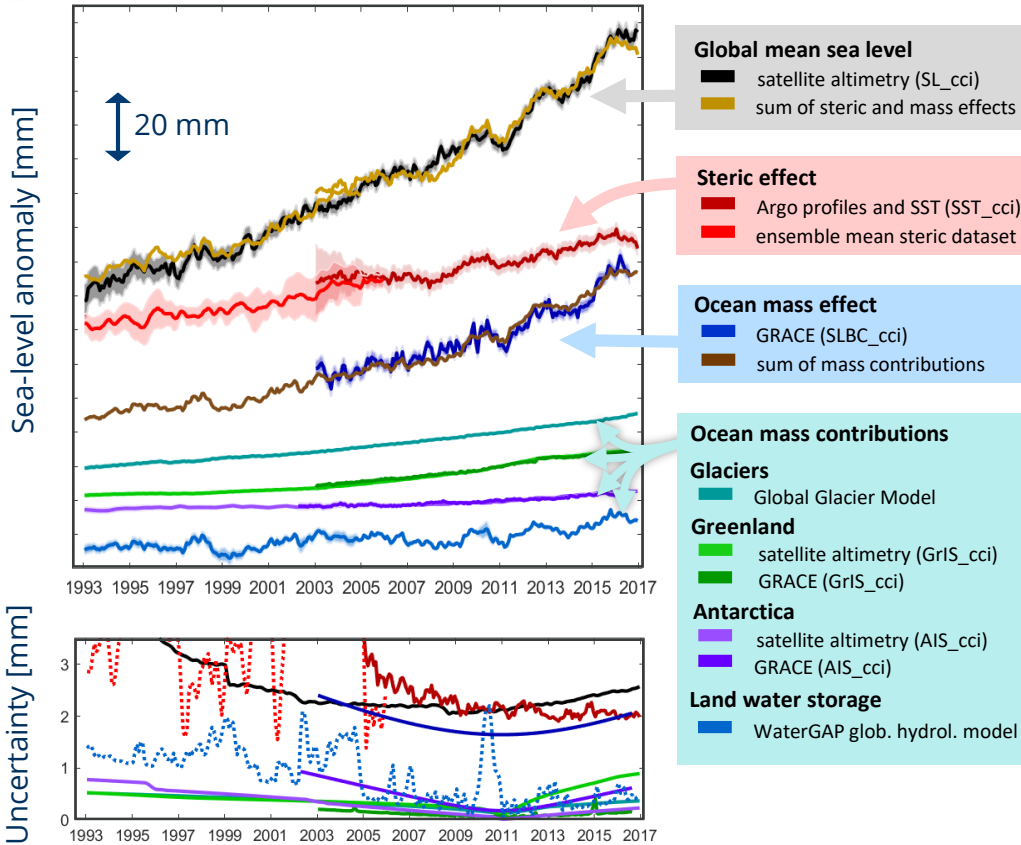


Global sea-level and ocean-mass budgets using advanced data products and uncertainty characterisation

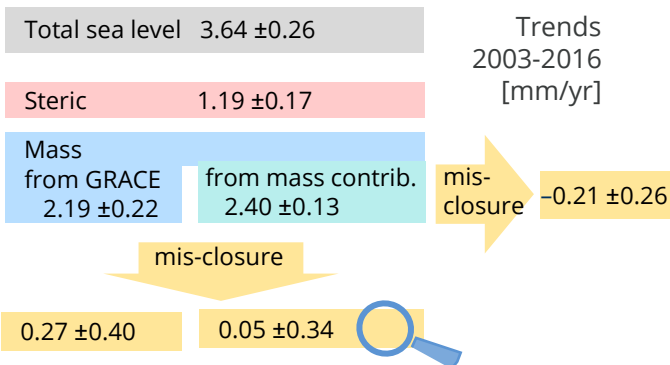
1 Datasets developed & advanced within ESA Climate Change Initiative



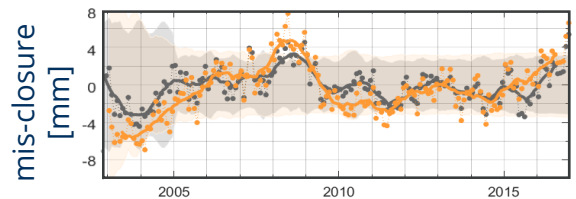
Martin Horwath & SLBC_cci Team



2 Linear trends: budgets are closed



3 Monthly anomalies: budgets are closed



4 Read details and find data link: doi 10.5194/essd-2021-137



cci



sea level budget closure
cci